

---

---

---

---

---

---

---

---



---

---

---

---

---

---

---

---



---

---

---

---

---


---

---

---

**Objectives**

- Develop an innovative process:
  - Improvement plan to engage staff
  - Encourage patients to ambulate
  - Reduce average length of stay
  - Improve the patient experience




---

---

---

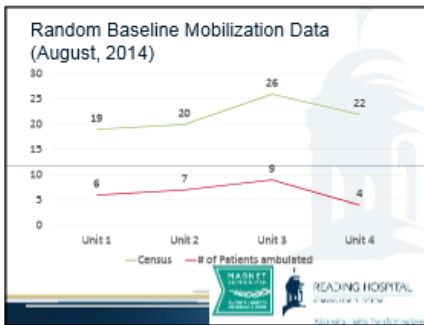
---

---

---

---

---




---

---

---

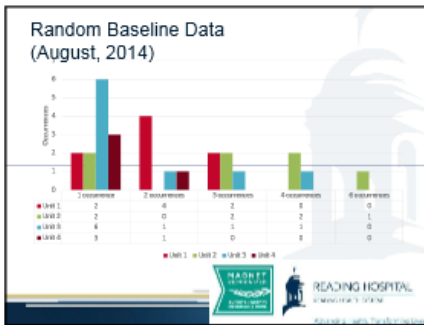
---

---

---

---

---




---

---

---

---

---

---

---

---

### Barriers to Mobilization

- Met with key stakeholders
  - Director of Clinical Quality Management
  - Manager of Physical Therapy Department
  - Sr. Director of Nursing Clinical Practice & Education
- Organizational Quality Council
  - Identify brainstorming
- Mobilization Process Improvement Team
  - Categorize
  - Prioritize



---

---

---

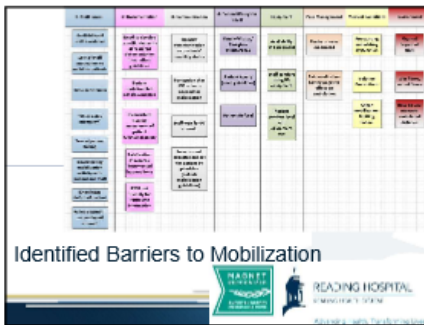
---

---


---

---

---



### Identified Barriers to Mobilization



---

---

---

---

---

---

---

---

### Define the process for improvement

- Goals/ Outcomes to measure
- Timeframe
- Evaluate progress/outcomes and balancing measures
- Disseminate information



---

---

---

---

---


---

---

---

**Develop strategies**

- Change Policy to Guideline
- Measure distances throughout the institution
- Interdisciplinary work with providers to order mobilization protocol
- Therapy participation in daily multidisciplinary rounds
- Nursing owns & drives



---

---

---

---

---

---

---

---

**Develop strategies**

- Documentation of mobilization
- Automated running of reports
- Equipment enhancements & availability
- Mobilization Campaign



---

---

---

---

---

---

---

---

**"Mobilize to Magnet"**  
The Mobilization Process Improvement team has a GOAL:  
"Mobilize to Magnet"  
996 Miles to Orlando, FL, from the Reading Health System!  
Distances documented for patient ambulation will be calculated on a weekly basis.  
Orlando by the start of the Magnet conference, October 5, 2016.



---

---

---

---

---

---

---

---



---

---

---

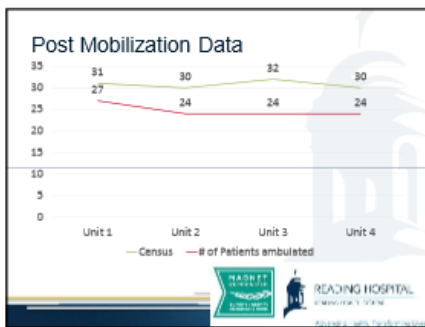
---

---

---

---

---



---

---

---

---

---

---

---

---



---

---

---

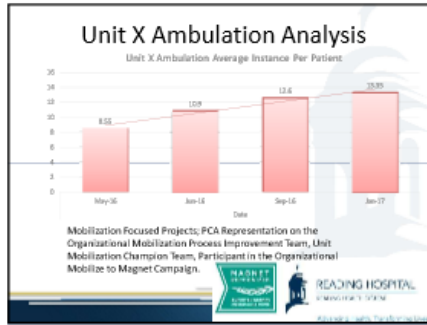
---

---

---

---

---




---

---

---

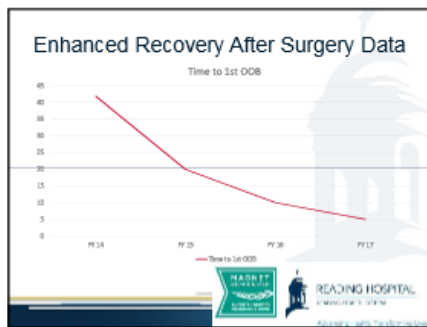
---

---

---

---

---




---

---

---

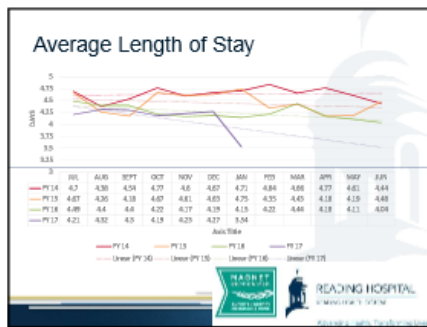
---

---

---

---

---




---

---

---

---

---

---

---

---

